

# History of The Upjohn Company

**Upjohn**

1886 to 1995



**Pharmacia  
& Upjohn**

1995 to 1999

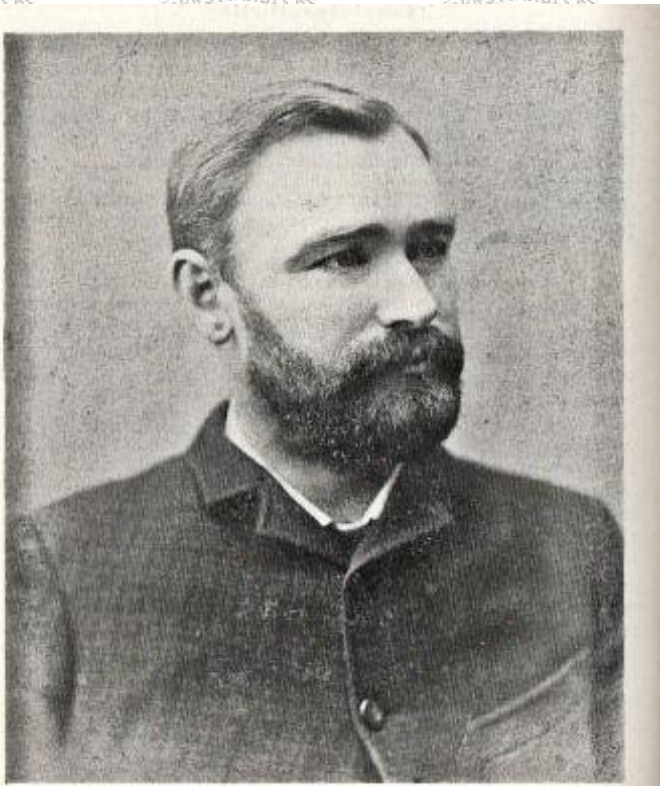


2003 to date

**PHARMACIA**

1999 to 2003

# W.E.Upjohn – Founder of the Company

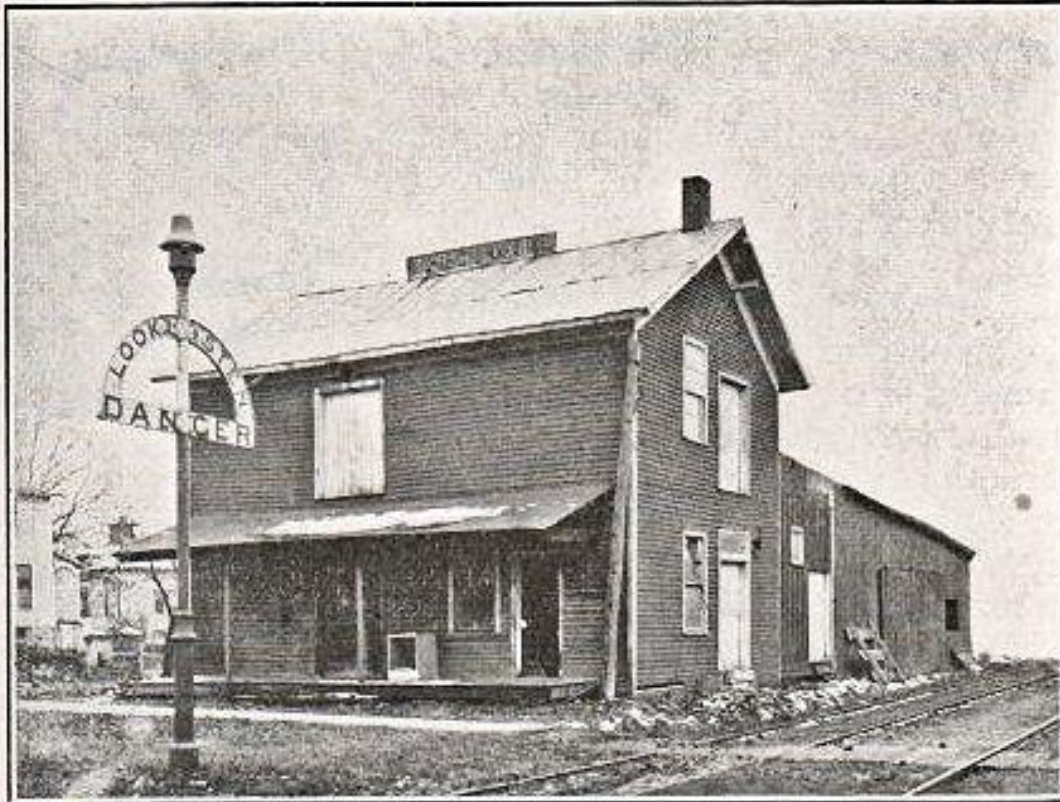


**Dr. Wm. E. Upjohn, at the time he founded The Upjohn Company, then known as The Upjohn Pill and Granule Company**

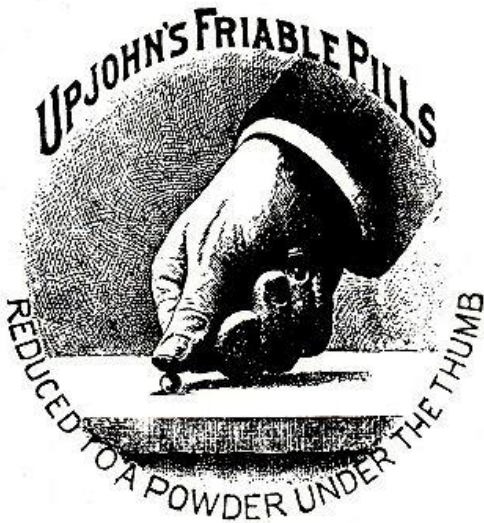




# First Company Building - Hastings



# The Friable Pill on Company Logos





# Advertising for the Friable Pill

*Under the thumb  
versus  
under the hammer*

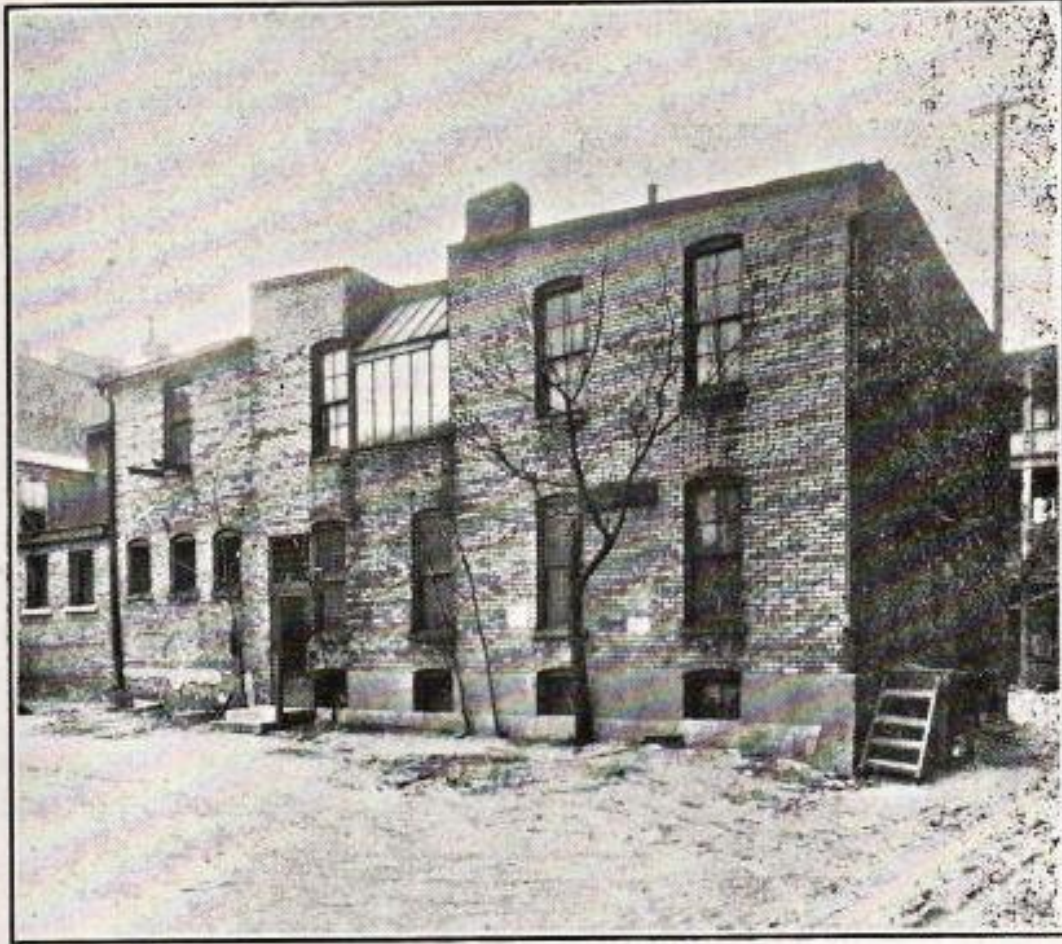


*Which  
will you  
specify?*

**UPJOHN'S FRIABLE PILLS**  
CAN BE REDUCED TO A POWDER UNDER THE THUMB

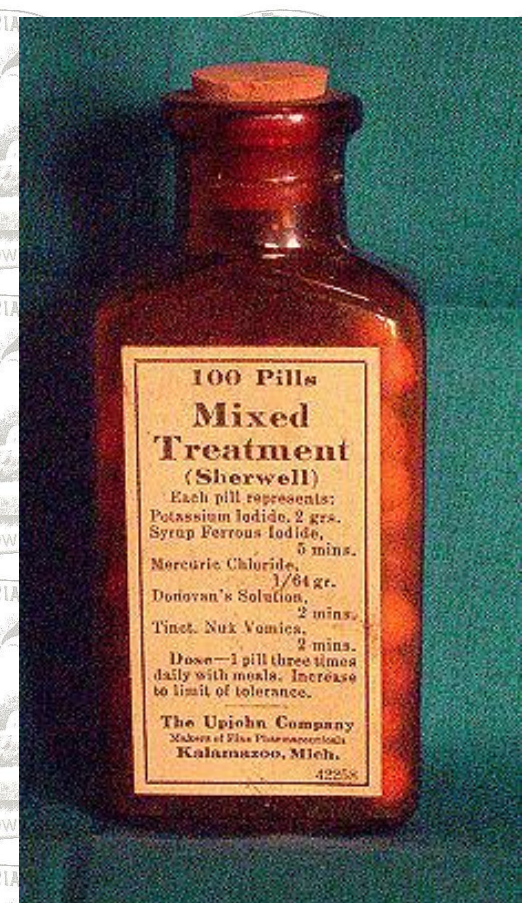
**XIV**  
A BROOKLYN DRUGGIST  
SHOWS A NEW TEST FOR PILLS.  
SEE PHARM. ERA DEC. 10TH. HE  
DROVE INTO THE WOOD 22 OIL  
OF 26 KINDS SELECTED  
OTHERS...

# Move to Downtown Kalamazoo



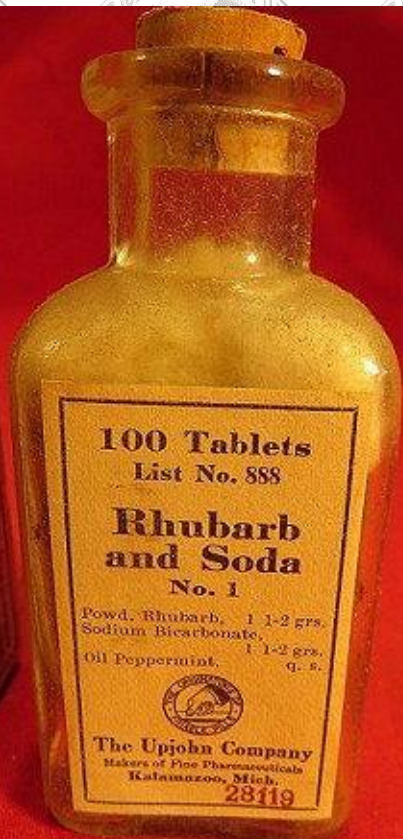


# Early Products





# More Early Products





# An Early Cannabis Product



# Early Expansion





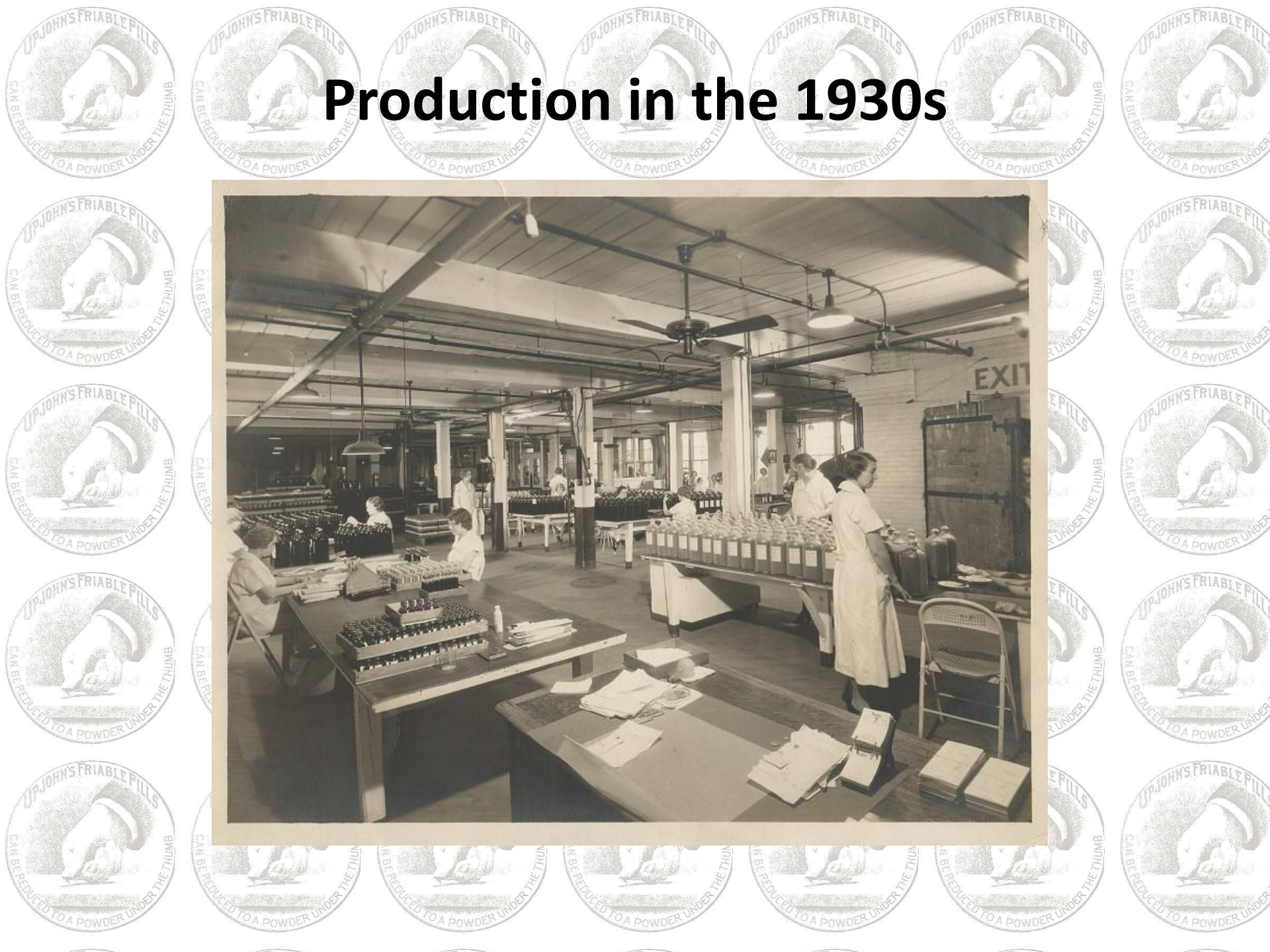
# Major New Buildings in the 1930s



## THE UPJOHN COMPANY OF THE FUTURE

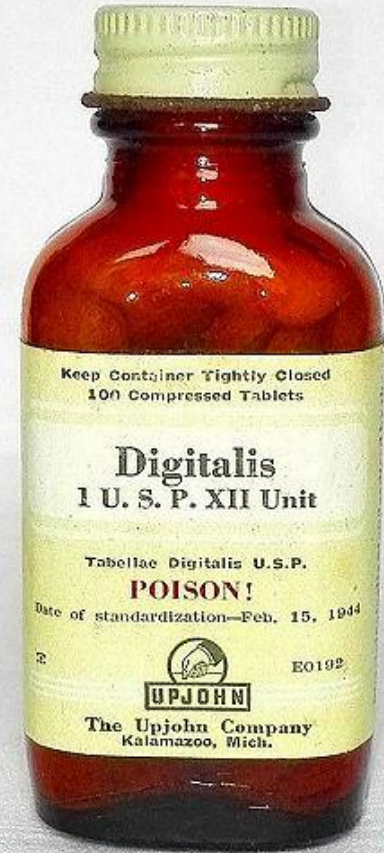
Architect's drawing of the proposed new office building and the first unit of the manufacturing plant, in the center of which rises Research Tower. Pictures of the new concentrate building, which is now nearly ready for use, and of the steam plant on which work has already started, will be found on page 460.

# Production in the 1930s



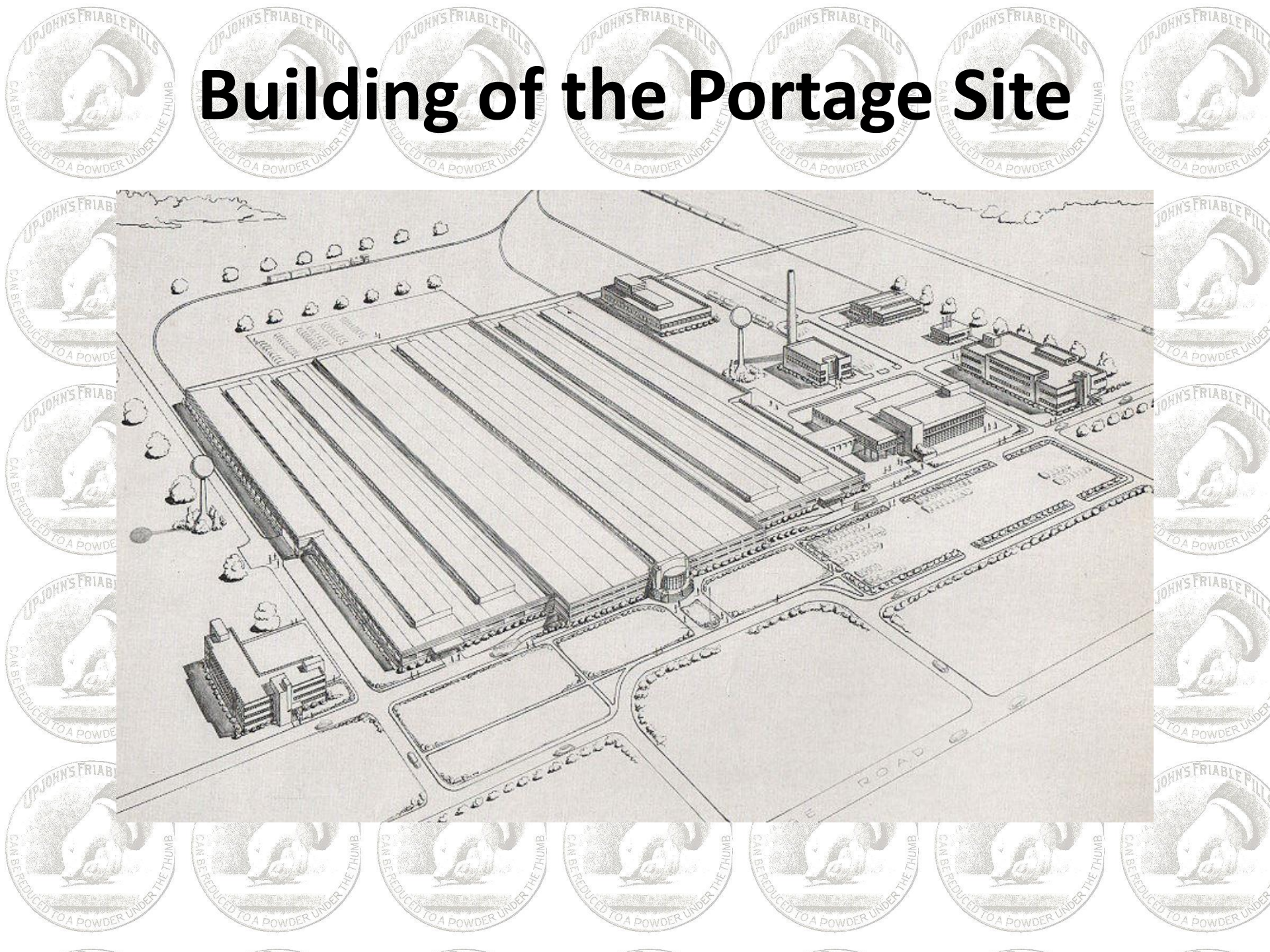


# Support During The Second World War





# Building of the Portage Site





# Building of the Portage Site





# Building of the Portage Site





# Building of the Portage Site





# Building of the Portage Site





# Building of the Portage Site



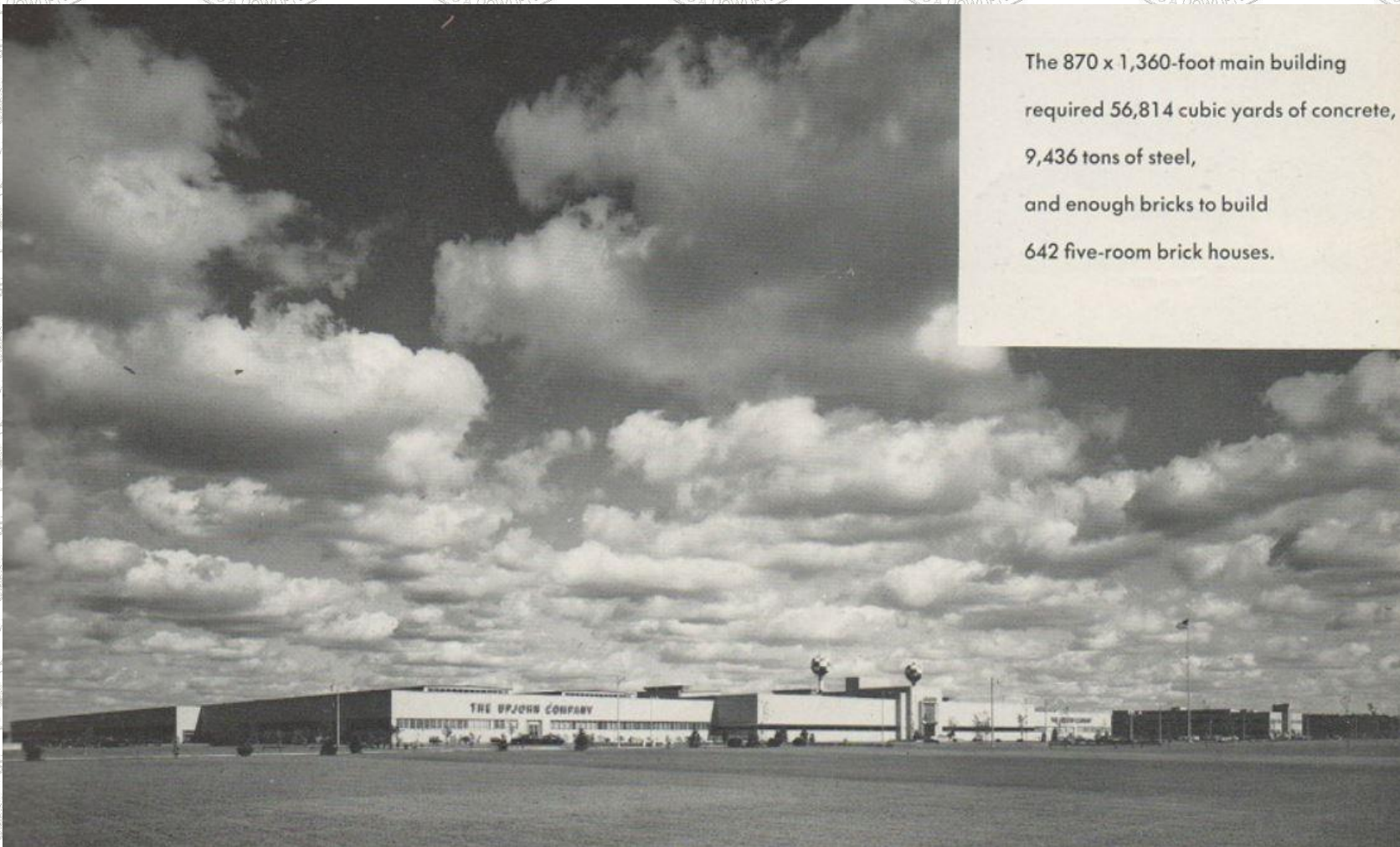
# Building of the Portage Site





# Building of the Portage Site

The 870 x 1,360-foot main building required 56,814 cubic yards of concrete, 9,436 tons of steel, and enough bricks to build 642 five-room brick houses.



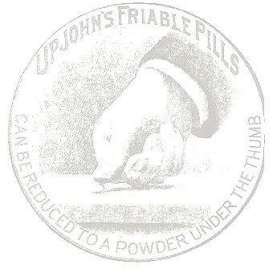
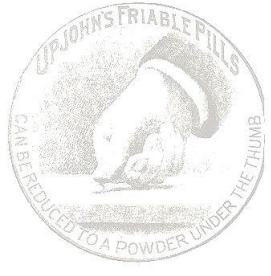
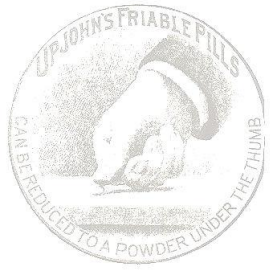
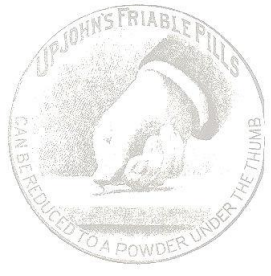
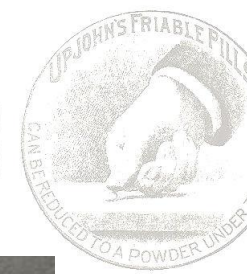
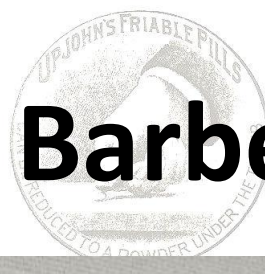
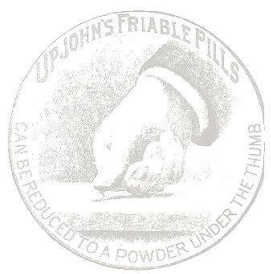


# Buses to the Portage Plant





# The Barbers Shop in B41





# The Company Goes Public



**At the November 1958 board meeting, the board voted to take the company from a private one, owned by the Upjohn family for the past 70 years, to a public company. Upjohn Company stock split 25 for 1 and family members sold 2.41 million shares (17% of the total) to the general public at \$45 a share.**



# A New Headquarters Building





# A New Headquarters Building





# A New Headquarters Building





# A Visitor in 1968





# Public Tours of Building 41



Upjohn

*These Upjohn escorts are carefully selected and trained to make the visitors' plant tour both pleasant and worthwhile.*





# Products You May Recognize

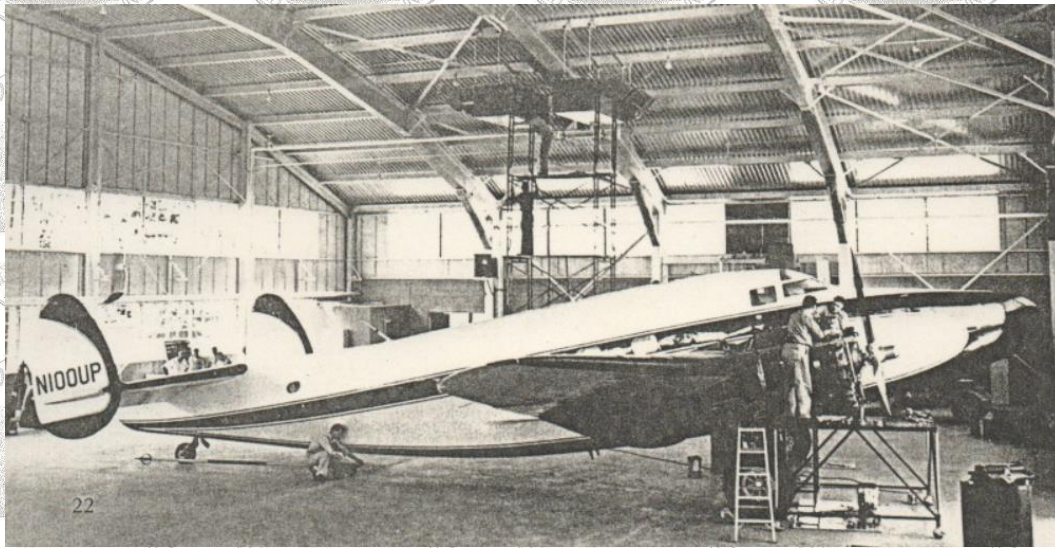


# More Products from Later Years

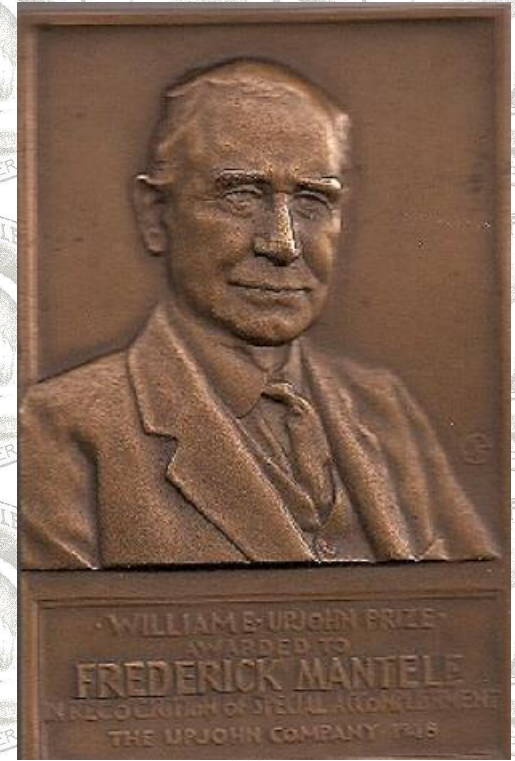




# The Upjohn Airforce

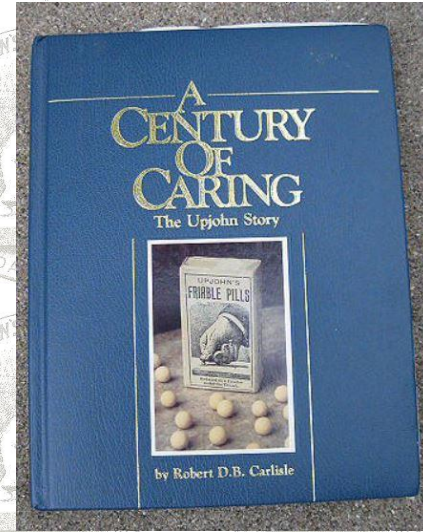


# The Upjohn Awards





# Centennial Celebration



# 1995 Merger with Pharmacia





www.upjohn.net

http://www.upjohn.net/



Memories of The Upjohn Co... x

View Favorites Tools Help

[amazon](#) [Craigslist](#) [Facebook](#) [Mi Radar](#) [Upjohn](#) [Google News](#) [Google](#) [Wikipedia](#) [YouTube](#) [MichRRs](#) [Cafepharma](#) [LinkedIn](#)

## *Memories of The Upjohn Company*

Welcome to upjohn.net, a place to browse photos and information about The Upjohn Company of Kalamazoo, Michigan (1886-1995) **\*\* What's New on Upjohn.net \*\***

### ----- Pre-1950s Memories -----

[Earliest Memories](#)

[Blanche Porter - An Early Employee](#)

[Early New York Office Papers](#)

[Upjohn Patents](#)

[Life & Purposes of W.E.Upjohn](#)

[Manufacturing in 1937](#)

[More 1930s Photos](#)

[Early Lab Instruments](#)

[Flights of Dr. Richard Light](#)

[Military Support in WWI and WWII](#)

[Warehouses on N. Pitcher St.](#)

[The Portage Road Project](#)

[W.E.Upjohn Photos & Articles](#)

[Early Upjohn Letterhead](#)

[Early Photos of Executives](#)

[The Memos of John McColl](#)

[Photo Album from the 1930s](#)

[Photos of the Kalamazoo site](#)

[Citrocarbonate](#)

[The Kalamazoo Office 1930s](#)

[Central Stock Control](#)

[Building 38 Photos](#)

[Manufacturing Expansion Report](#)

[Building 41 Construction](#)



# Part of Jeremy's Upjohn Bottle Collection





# Questions?

